

**A series.
A Unique Innovation. 25% Lighter.**



ExTe

Securing cargo. We invented the concept.



The World's Lightest Bunk Load More Timber.

The world's fastest lightweight.

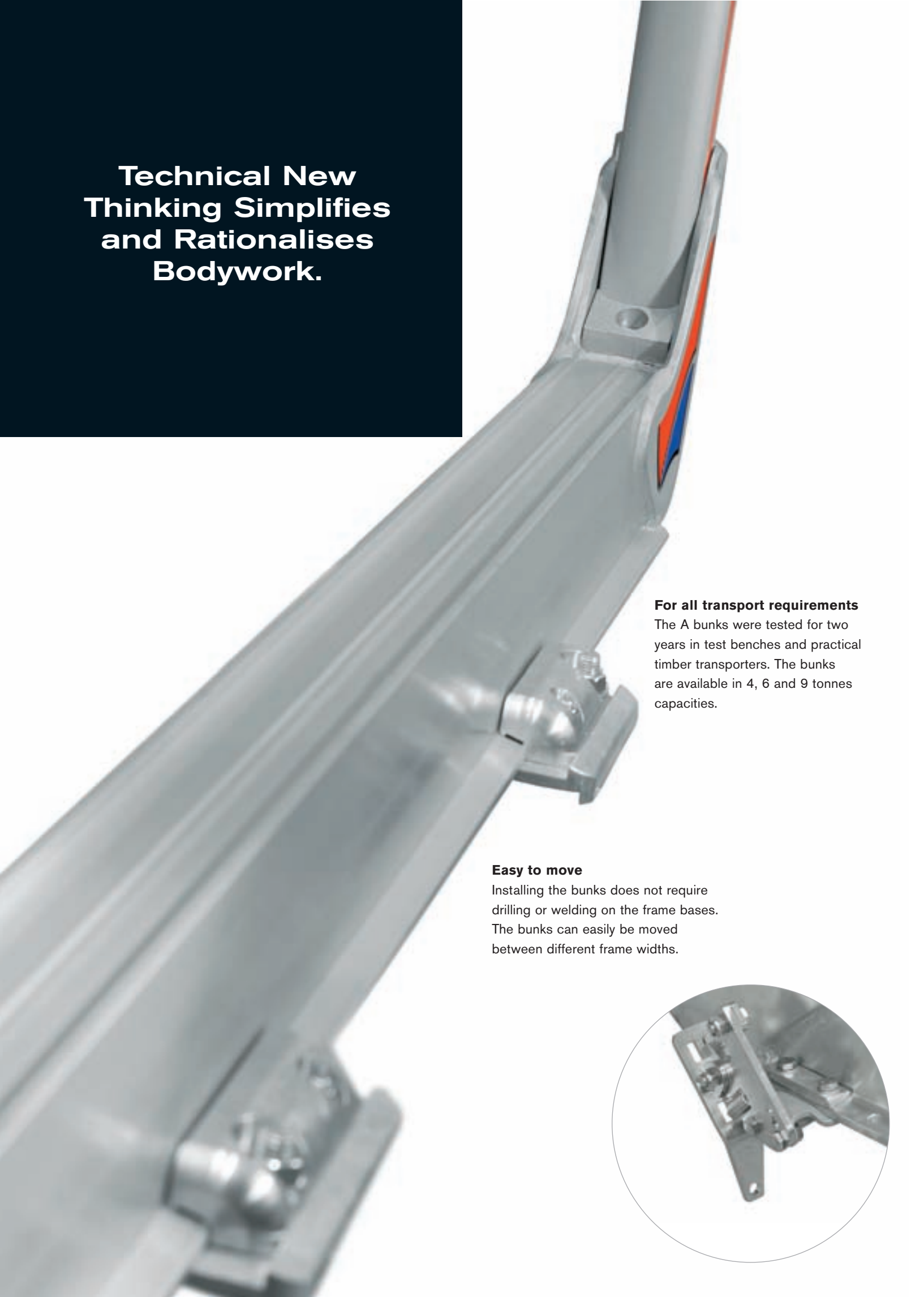
Part of ExTe's strategy is listening to what carriers and bodybuilders want now and in the future. By thinking along new lines we have not only developed the world's lightest bunk, which give more space for large loads and better profitability for carriers. We have also made sure that the A bunks are the fastest to install in their class.



A6

WST 524

**Technical New
Thinking Simplifies
and Rationalises
Bodywork.**

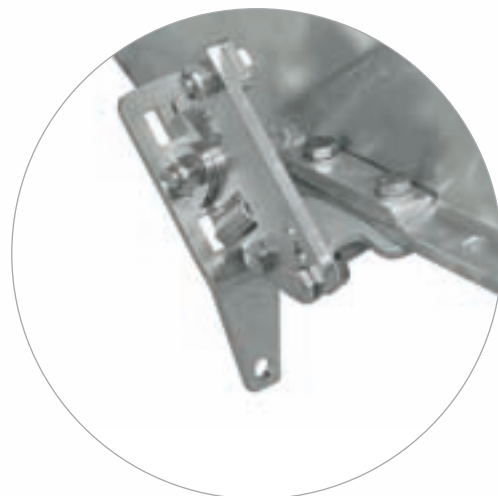


For all transport requirements

The A bunks were tested for two years in test benches and practical timber transporters. The bunks are available in 4, 6 and 9 tonnes capacities.

Easy to move

Installing the bunks does not require drilling or welding on the frame bases. The bunks can easily be moved between different frame widths.





Rational bunks

The same stakes are used for both the E and A series. The stock retention of stakes is more rational for bodybuilders and hauliers with several outfits.

More profitable transporters

The A series are the lightest bunk on the market and provide space for larger and more profitable timber loads.

Stabilising flange

Pre-drilled flanges facilitate installation of tensioners. The flange on the member means that the bunk is stable.

Faster to install

The A bunks are prepared for quick and easy installation. It saves time and costs are reduced.

Clever use of materials

The profiles of the bunks have been optimised so that there is more material where the stresses are greatest. Safety is increased and weight is reduced.

**Innovation and
Design Provide New
Possibilities.**



Easy to make decisions

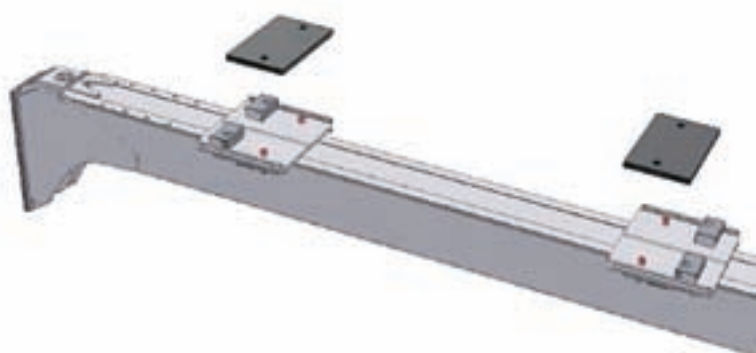
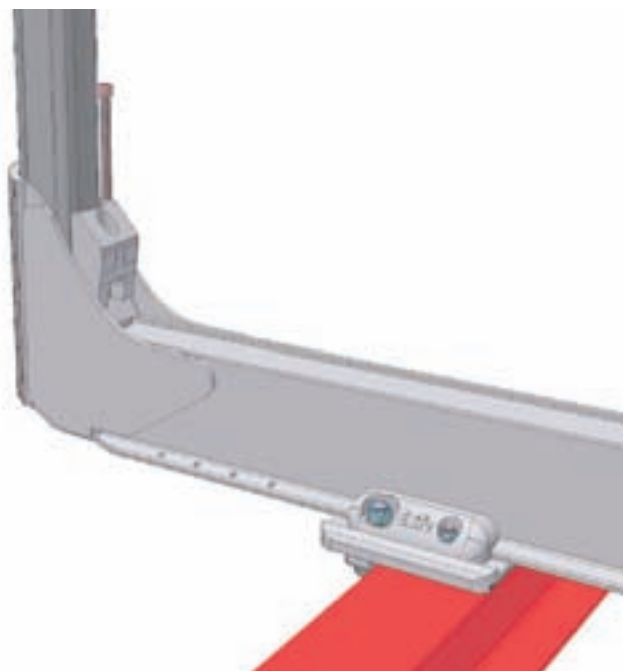
Allow common sense and feelings to work together. It is easy to see all the advantages that technical innovation and functional design can provide. The A bunks mean new possibilities. Not least for your profitability.



A new method

Once again we have shown how to create more cargo space by following different avenues. And with no reduction in safety. Classic properties which simplify your day.

**The A series
has Been Thought
Through Down to the
Smallest Detail.**



Quick centring of the crossmember

To facilitate installing the mounting correctly turn the bunk upside down. Using the groove in the centre of the crossmember, it is easy to centre the crossmember to the width of the frame.

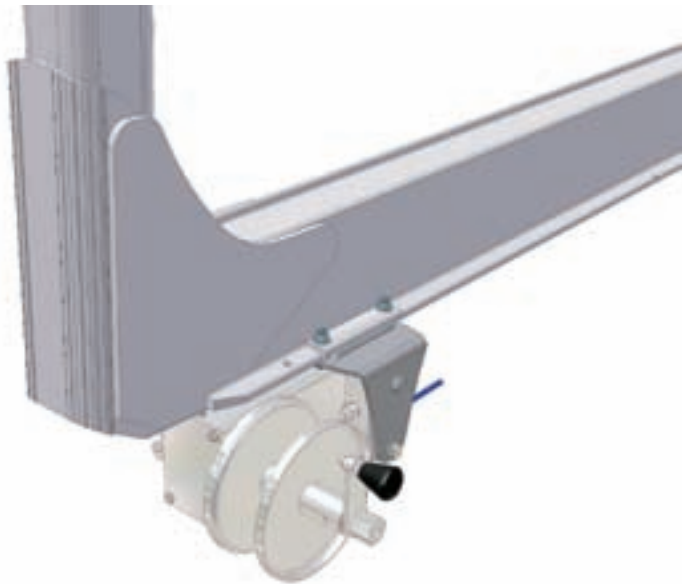
The bunk is locked into position

When the installation plates and locking lugs have been fixed, the bunk is placed on the frame. The bunk is then locked using a bracket under the frame flange.



No further drilling required

Stainless steel pins lock the bunks laterally and no drilling is necessary in the crossmember. The stakes are locked into position with anti-corrosion treated wedges.

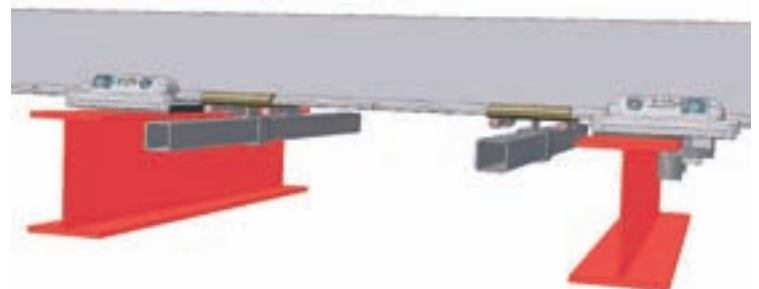


Prepared for tensioners

All bunks are pre-drilled for installation of Luftman tensioners. There are two possible mounting positions. The quick release mechanism can be mounted in three different positions. Pre-drilling is the same on both sides of the bunk and allows flexible installation.

Maximum choice

The mounting attachments for moveable bunks are clamped into position without drilling. The plates are supplied loose to facilitate welding.



Technical Details

A series 4, 6 & 9 tonnes.

A4 – Bunk (crossmember/stakes/attachments): 101 kg. Max load per bunk: 4 tonnes.

A6 – Bunk (crossmember/stakes/attachments): 122 kg. Max load per bunk: 6 tonnes.

A9 – Bunk (crossmember/stakes/attachments): 131 kg. Max load per bunk: 9 tonnes.

Pre-drilled crossmembers

The crossmember flanges are pre-drilled so that the holes correspond to the Luftmans tensioner's attachment holes and quick release mechanism.

Simple special attachments

The A bunk's special attachments have been developed to make installation quick and easy. No further drilling is necessary.

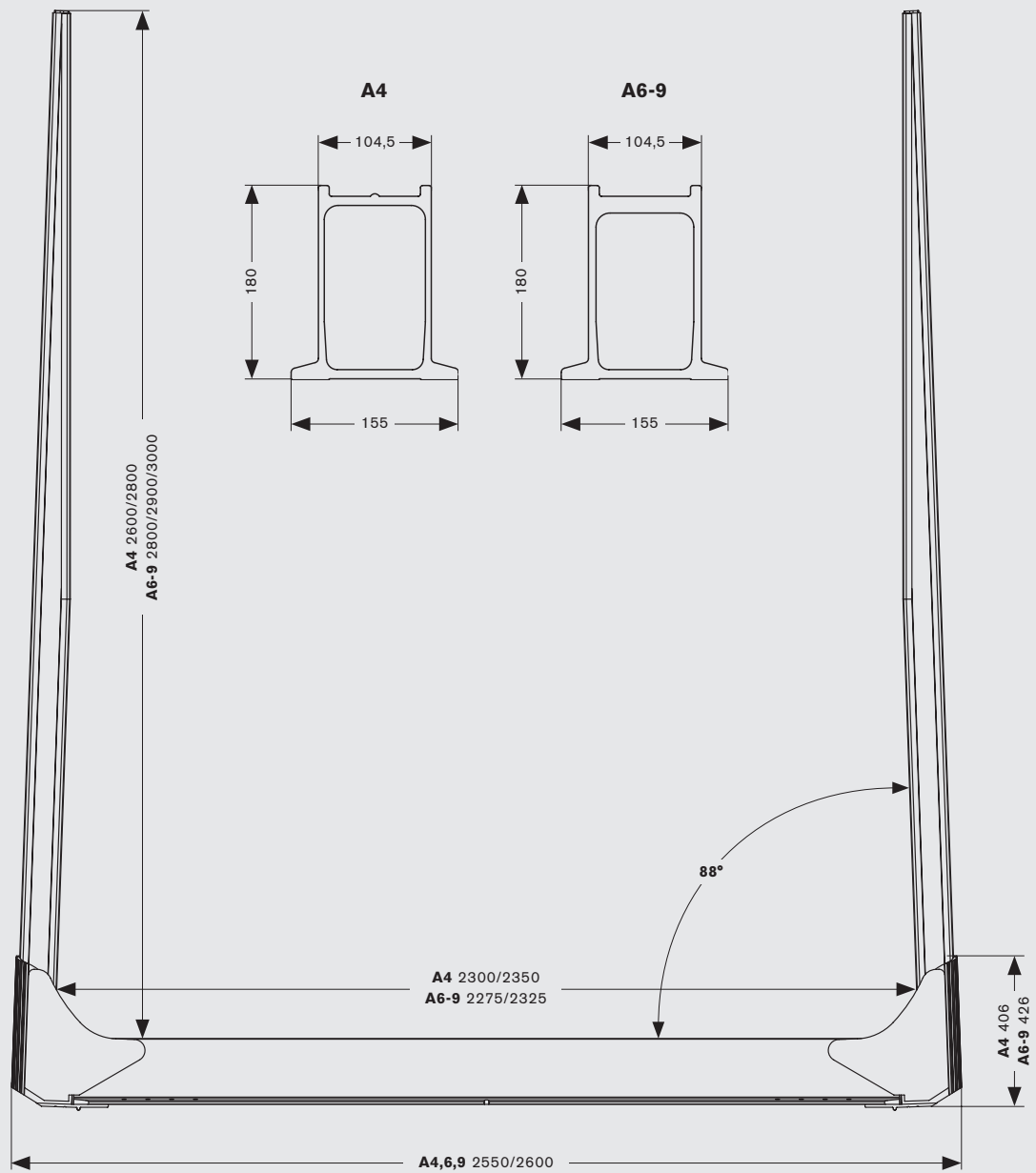
Tightening torques for internal screwed joints

There are different tightening torques depending on whether the screws are lubricated or dry. Lubricated screws are recommended. All screws are supplied zinc coated (Fzb).

	<i>Fzb/dry</i>	<i>Fzb/lubricated</i>	<i>Included in</i>
M20	380 Nm	327 Nm	Attachments
M16	195 Nm	167 Nm	Attachments for moveable bunks, wedges
M12	80 Nm	69 Nm	Luftman tensioners / quick release mechanism
M10	45 Nm	38 Nm	Accessories

Technical Details

A series 4, 6 & 9 tonnes.



More ExTe on-line and in print



ExTe has by far the widest range on the market for all needs. Your best guarantee is development that never compromises on safety.

You can read more about ExTe's products on our website at www.exte.com, or in our folders. Ordering of folders: tel. +46 (0)651-175 00, fax +46 (0)651-175 03, e-mail info@exte.se

ExTe

Securing Cargo. We invented the Concept.